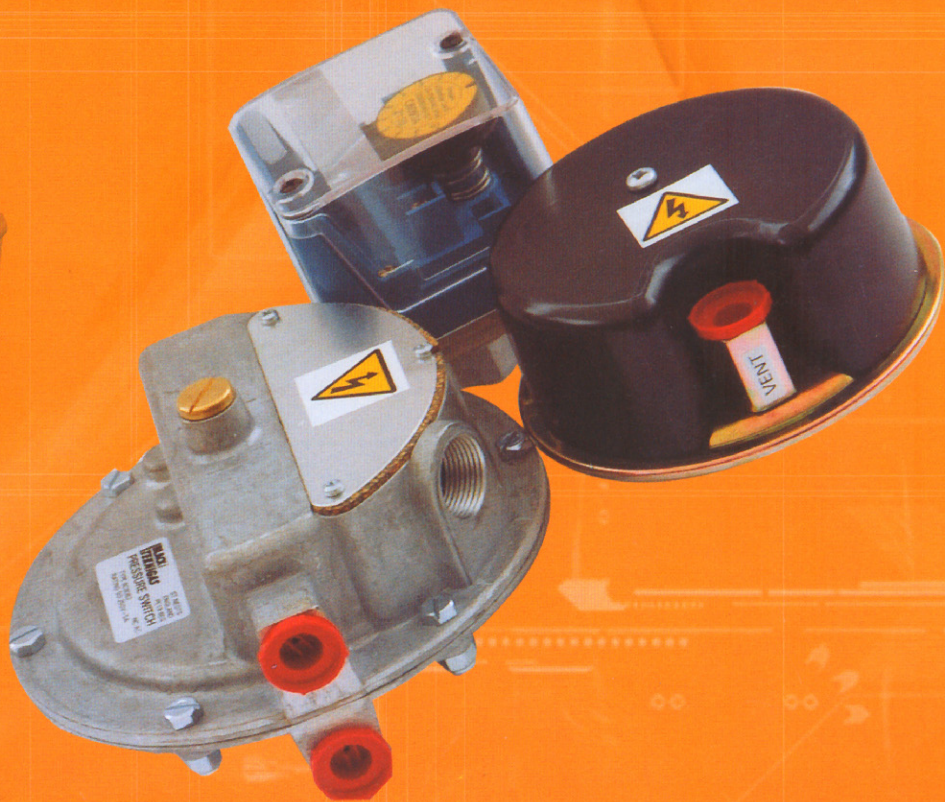




BLACK TEKNIGAS

The Leading British Controls Manufacturer

LOW PRESSURE SWITCHES



Certificate No. FM13979

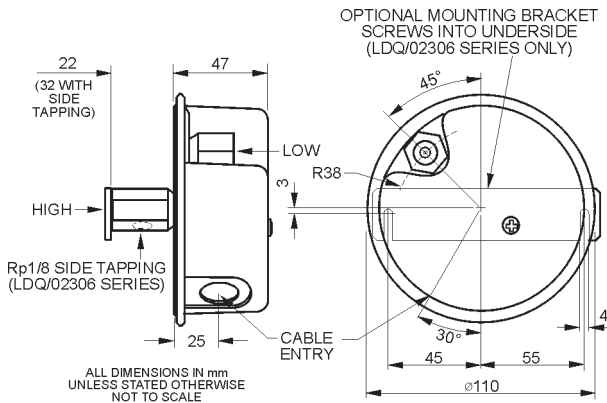
APPLICATION

A range of low pressure switches for positive, negative and differential pressure applications, suitable for use on air, non-corrosive and non-combustible gases and liquids (see individual specification for suitability). Mounting of the switches is universal except for certain very low pressure applications when the mounting should be vertical; these are signified in the individual specifications. The pressure switches should be mounted on brackets or supported on the pipework as applicable. Duct mounting kits are available for most models

LDQ SERIES

FEATURES

- * differential, positive or negative pressure
- * set point adjustable (under cover)
- * pressed steel diaphragm housing, zinc plated
- * nitrile rubber sensing element
- * electrical connection to screw terminal block
- * zinc plated steel pressure entries tapped G $\frac{1}{4}$
- * optional side tapping for pressure test point
- * optional mounting bracket (LDQ/02306 models)
- * single and double wall duct mounting kits available
- * housing protected to IP40; IP65 enclosure optional



MODEL	SET POINT RANGE mbar	SWITCHING RESET (max.) mbar	MAXIMUM PRESSURE mbar
LDQ/023042 LDQ/023062	0.5 to 3.5	0.45	180
LDQ/023043 LDQ/023063	1.3 to 15	1	
LDQ/023044 LDQ/023064	10 to 55	6	
LDQ/023045 LDQ/023065	30 to 100	20	
LDQ/023046 LDQ/023066	40 to 130	30	
LDQ/023047 LDQ/023067	50 to 180	40	
LDQ/023049* LDQ/023069*	0.4 to 0.8	0.35	

* MOUNTED WITH DIAPHRAGM VERTICAL

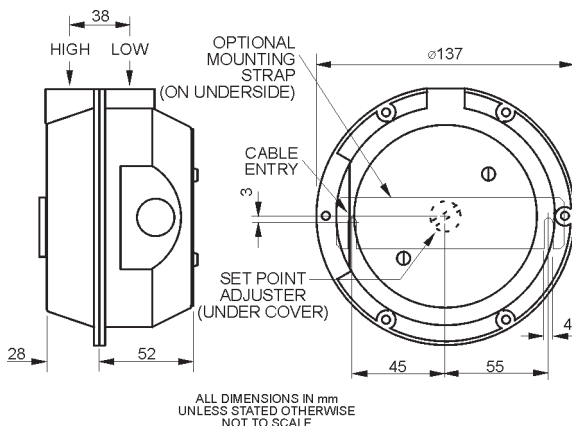
SPECIFICATION

- Connections:** Pressure - G $\frac{1}{4}$ (BS2779)
Electrical - Screw terminals, via 20mm diameter cable entry
- Mounting:** Optional strap (ACTU323350) for use with LDQ/02306 series
- Construction:** Zinc plated steel with nitrile rubber sensing element. Protection to IP40
- Media:** Air, non-corrosive and non-combustible gases
- Temperature:** Media & Ambient -10°C to 80°C
- Electrical Rating:** Standard & Ex d:
50-250V A.C., 30V D.C. 2A max.
- Weight:** 0.4kg

LDH SERIES

FEATURES

- * differential, positive or negative pressure
- * set point adjustable (under cover)
- * die-cast zinc alloy body
- * nitrile rubber sensing element
- * electrical connection to screw terminal block
- * pressure entries tapped G $\frac{1}{4}$
- * blind G $\frac{1}{4}$ port on underside for mounting
- * optional mounting strap
- * single & double wall duct mounting accessories
- * housing protected to IP40; IP65 option
- * optional visual set point indicator



MODEL	SET POINT RANGE mbar	SWITCHING RESET (max.) mbar	MAXIMUM PRESSURE mbar
LDH/0*	0.25 to 0.63	0.15	200
LDH/1	0.63 to 3.24	0.2	
LDH/7	2.5 to 17.5	1.0	
LDH/28	17 to 70	5.0	

* MOUNTED WITH DIAPHRAGM VERTICAL

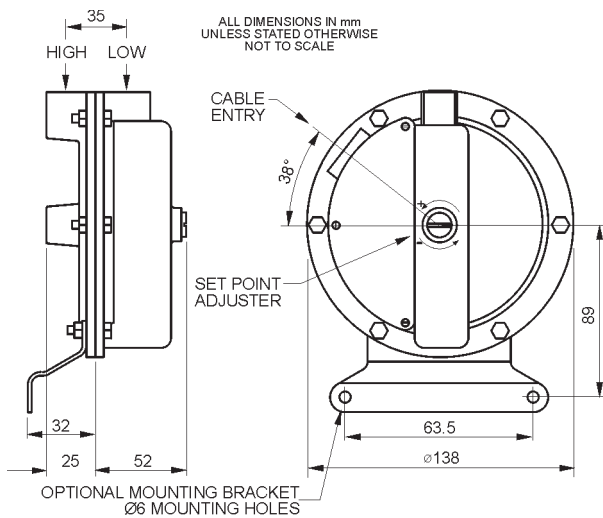
SPECIFICATION

- Connections:** Pressure - G $\frac{1}{4}$ (BS2779) on side.
Options: 'HIGH' port on underside, duct adaptor plate
Electrical - Screw terminals, via M20 cable entry
- Mounting:** Optional strap (ACTU323350) screws into blind port
- Construction:** Zinc alloy with nitrile rubber sensing element
Protection to IP40; optional cover for IP65
- Media:** Air, non-corrosive and non-combustible gases
- Temperature:** Media & Ambient -10°C to 80°C
- Electrical Rating:** 50 - 250V A.C. 5A max.
D.C. on application
- Weight:** 1.0 kg

SERIES 80

FEATURES

- * suitable for differential, positive or negative pressure
- * adjustable set point; protected by cover screw
- * die-cast aluminium alloy body
- * nitrile rubber sensing element
- * electrical connection to screw terminal block
- * pressure entries tapped Rp $\frac{1}{4}$
- * housing protected to IP40
- * blind Rp $\frac{1}{4}$ port on underside for mounting
- * optional mounting bracket
- * optional drilled port on underside



MODEL	SET POINT RANGE mbar	SWITCHING RESET (max.) mbar	MAXIMUM PRESSURE mbar
8039A*	0.25 to 2.5	0.22	70
8059	1.0 to 2.5	0.37	150
8062	2.5 to 15	1.0	
8063	15 to 43	1.25	
8068	40 to 70	3.0	

* MOUNTED WITH DIAPHRAGM VERTICAL

SPECIFICATION

Connections: Pressure - Rp $\frac{1}{4}$ (BS21) on side.
'HIGH' port on underside to order
Electrical - Screw terminals, via Pg13.5 cable entry

Mounting: Optional bracket (part no.BC17512)

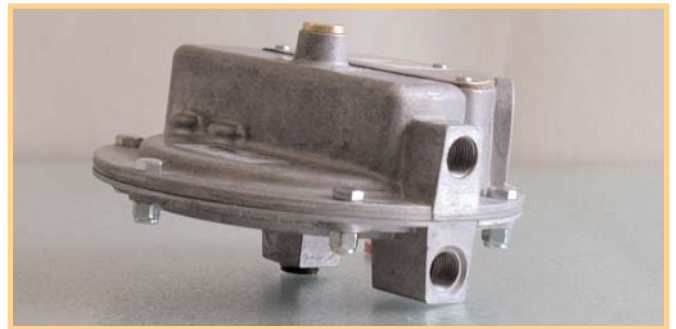
Construction: Die-cast aluminium alloy; IP40

Media: Air, non-corrosive and non-combustible gases

Temperature: Media & Ambient -10°C to 80°C

Electrical Rating: 50 - 250V A.C. 5A max.
D.C. on application

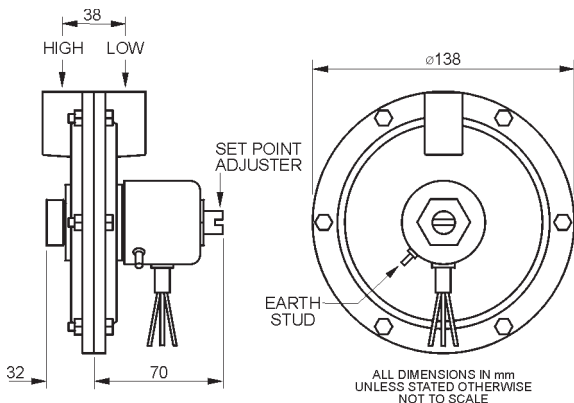
Weight: 0.65 kg



SERIES 81

FEATURES

- * differential, positive or negative pressure
- * set point externally adjustable
- * aluminium alloy body
- * nylon reinforced nitrile rubber sensing element
- * flying lead connections; protected to IP40
- * pressure entries tapped Rp $\frac{1}{4}$



MODEL	SET POINT RANGE mbar	SWITCHING RESET (max.) mbar	MAXIMUM PRESSURE mbar
8102	25 to 250	15	7000
8104	70 to 1050	35	
8106	350 to 2100	140	

SPECIFICATION

Connections: Pressure - Rp $\frac{1}{4}$ (BS21)
Electrical - 750mm flying lead, with Earth stud on casing

Construction: Aluminium alloy with nylon reinforced nitrile rubber sensing element.
Protection to IP40

Media: Air and compatible non-combustible gases and liquids

Temperature: Media & Ambient -10°C to 80°C
(precautions required to prevent liquids freezing)

Electrical Rating: 50 - 250V D.C. 5A max.
30V D.C. 5A max.

Weight: 1.15 kg

SERIES LDK

FEATURES

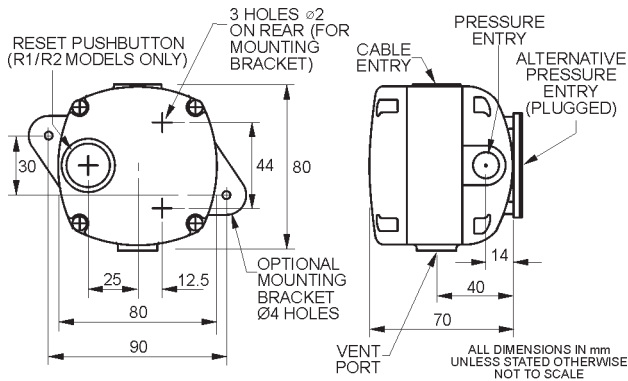
- * suitable for positive pressure applications
- * set point adjustable (under cover)
- * zinc alloy body; nitrile rubber sensing element
- * electrical connection to screw terminal block
- * side or bottom pressure entries tapped G $\frac{1}{4}$ "
- * can be screw mounted; optional mounting bracket
- * single and double wall duct mounting kits available
- * housing protected to IP54
- * manual reset option available;
- * type R1 open circuit on rising pressure
- * type R2 open circuit on falling pressure

MODEL	SET POINT RANGE mbar	SWITCHING RESET (max.) mbar	MAXIMUM PRESSURE mbar
LDK/2P*	0.4 to 5.0	0.35	200
LDK/10	4 to 25	1.0	
LDK/40	15 to 100	3.5	
LDK/70	25 to 180	4.5	

* MOUNTED WITH DIAPHRAGM VERTICAL

SPECIFICATION

- Connections:** Pressure - G $\frac{1}{4}$
Electrical - Screw terminals, access through M20 orifice
- Mounting:** Optional bracket assembly part no. ACTU021391
- Construction:** Zinc alloy with nitrile rubber sensing element
Protection to IP54
- Media:** Air, non-corrosive and non-combustible gases
- Temperature:** Media & Ambient -10°C to 80°C
- Electrical Rating:** 50 - 250V A.C. 2A max.
30V D.C. 2A max.
- Weight:** 0.67 kg



SERIES BT6097

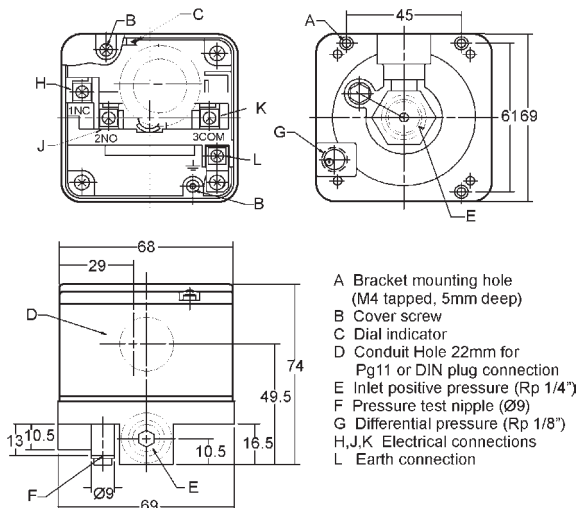
FEATURES

- * Differential, Positive or Negative Pressure
- * Set point Indicator (+/-15%)
- * Side or Bottom Pressure Entries tapped G $\frac{1}{4}$ "
- * Suitable for all 3 families of combustion gas
- * Hydrocarbon resistant NBR sensing element

MODEL	SET POINT RANGE mbar	SWITCHING RESET (max.) mbar	MAXIMUM PRESSURE mbar
BT6097A2110	1.0 to 10	0.4	200
BT6097A2210	2.5 to 50	0.6	300
BT6097A2310	30 to 150	2.8	500
BT6097A2410	100 to 500	7.0	1500

SPECIFICATION

- Connections:** Pressure - Inlet +ve Rp 1/4" int. (x2)
Differential pressure Rp 1/8" int.
Electrical - screw connections 3.5mm
- Mounting:** Vertical or Horizontal with Setting dial upwards.
- Construction:** Aluminium Diecast housing, with NBR sensing element. Polycarbonate cover.
Polybutylene teraphtelate Case
Protection to IP54
- Media:** Gas (inc. combustible) or Air
- Temperature:** Media -15 to +60°C,
Ambient -15 to +80°C
- Electrical Rating:** Resistive Max. 250V AC, 5A
Inductive Max. 250V AC, 3A
Minimum. 24V AC, 50mA



BLACK
TEKNIGAS
www.blackteknigas.com



Certificate No.FM13979



E mail sales@blackteknigas.co.uk
Catalogue Ref. CAT005/C

Bydand Lane
Little Paxton
St.Neots
Cambridgeshire
PE19 6EG
Tel. +44 (0)1480 407074
Fax +44 (0)1480 407076