

ROOM THERMOSTATS
1 STAGE

TA-2.. PTR01..

These products can be used to monitor the temperature inside buildings and switch heating, cooling or other units. These units are tamperproof.

**TA-2**

Adjustable limit stops under the cover
Main adjustment via knob.
Backplate for 1 gang BS box is included.

PTR01-010 / 045 / 048

Knob adjustment only.
Range and limit stops provided.
Order backplate separately.
Enclosure Flammability = UL94-V0

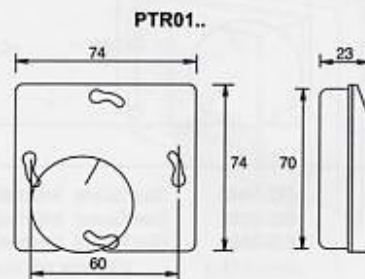
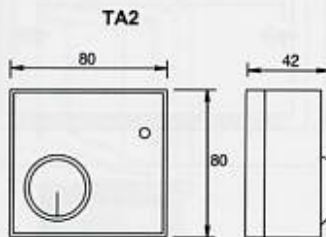
PTR01-910

Adjustment under the cover.

Type	Stages	Range °C	Diff °C approx	230VAC	Function	Function	Sensing Element	Enclosure
TA2	1	5/30	1	SPDT 10(2.5)A	Volt Free Contacts	Htg or Clg	Bellows	IP20
PTR01-045	1	-20/+30	0.5	SPDT 10(3)A	-	Htg or Clg	Bimetal	IP30
PTR01-010	1	5/30	0.5	SPDT 10(3)A	-	Htg or Clg	Bimetal	IP30
PTR01-048	1	10/60	0.5	SPDT 10(3)A	-	Htg or Clg	Bimetal	IP30
PTR01-910*	1	5/30	0.5	SPDT 10(3)A	-	Htg or Clg	Bimetal	IP30

*Concealed adjustment.

DIMENSIONS:



ACCESSORIES:

EG-1000	Stat Guard	Internal Dims	133 H x 155 W x 70 D
EG-2000	Stat Guard	Internal Dims	102 H x 123 W x 60 D
EG-3000	Stat Guard	Internal Dims	123 H x 196 W x 70 D

High impact polycarbonate, virtually unbreakable. Supplied with lock & key



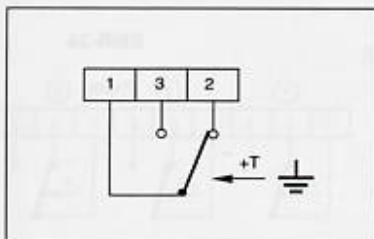
EE-BP2 Backplate for PTR01.. will fit square or round outlet boxes.

EG..

EE-BP2

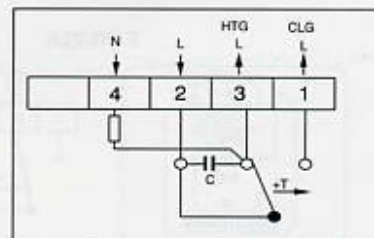
WIRING:

TA-2



To remove the TA-2 front cover and access the terminals, release the top clip using a small, flat screwdriver.

PTR01 - 010 / 045 / 048 / 910



INSTALLATION:

Install at a height of approx. 1.5m
Keep away from radiators, direct sunlight & other heat sources.