

# BALL VALVES 3 WAY

EB..

These 3 way Ball Valves are suitable for use in heating and air conditioning applications to control the flow of chilled water, hot water & up to 30% glycol in closed circuit systems. In open circuits ie mains water or cooling towers, mineral deposits will impair the operation. For diverting applications install in the return pipe only. For mixing applications install in the flow pipe. There must be 2 inlets and 1 outlet stream at all times. Reversal of this will cause vibration & water hammer.



Body : EB..TA...LG = Brass  
 Body : EB..FL Flange: Cast Iron  
 Ball: Brass Nickel Plated  
 Ball Gasket: PTFE  
 Valve Stem Gasket: Rubber EPDM  
 Rotary travel 90°  
 Flanged valves to PN16  
 Full Bore Passage  
 Tight Shut-off

Type	Size	Kvs m <sup>3</sup> /h	Max Diff Pressure Bar	Max Pressure Bar	Port Position Table	Media Temp °C	Select Motor
EB15-3TA	15mm 1/2" BSP Female	13.4	6	16	1	2 - 110	E08.. E16..
EB20-3TB	20mm 3/4" BSP Female	16.5	6	16	1	2 - 110	E08.. E16..
EB25-3TC	25mm 1" BSP Female	18	6	16	1	2 - 110	E08.. E16..
EB32-3TD	32mm 1 1/4" BSP Female	26	6	16	1	2 - 110	E16..
EB40-3LE	40mm 1 1/2" BSP Female	48.5	6	16	2	2 - 110	E16..
EB50-3LF	50mm 2" BSP Female	64.5	6	16	2	2 - 110	E16..

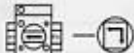
Supplied complete with mounting bracket for the motor.

The motor Part Number must be clearly specified to match each valve ordered.

Select motor type E08..E16..E24..E32..from separate data sheet.

### DIMENSIONS:

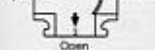
VERTICAL T  
Align the motor shaft as shown and fit onto valve spindle.



The arrows on the shaft and spindle just indicate the open ports.



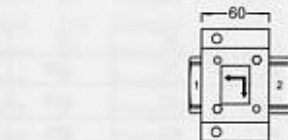
Open Motor Clockwise



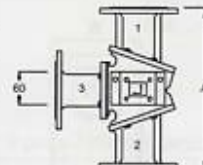
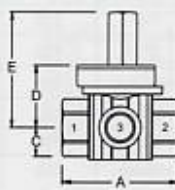
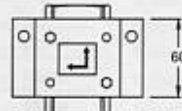
Closed Motor Clockwise



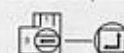
Open Motor Anti-Clockwise



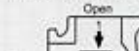
Install the valve with the spindle at any angle from vertical to 30° above horizontal.



HORIZONTAL T  
Align the motor shaft as shown and fit onto valve spindle.



The arrows on the shaft and spindle just indicate the open ports.



Open Motor Clockwise



Closed Motor Clockwise



Open Motor Anti-Clockwise

TABLE 1	A	B	C	D
EB15-3TA	73	73	31	80
EB20-3TB	84	87	35.5	84.5
EB25-3TC	95	104	40	167
EB32-3TD	107	115	46.5	178

TABLE 2	A	B	C	D	E
EB40-3LE	119	60	39	58	107
EB50-3LF	138	71.5	47.5	148	197
EB65-3LG	164	89	60	94	210

TABLE 3	A	B	C	D	FL
EB50-3FFL	320	160	112.5	152.5	165
EB65-3GFL	350	175	120.5	160.5	185
EB80-3HFL	390	195	130	170	200
EB100-3LFL	430	215	140	180	220

### ACCESSORIES:

- EE-5EB Linkage Kit with spring return actuator 15 - 32mm  
 EE-6EB Linkage Kit with spring return actuator 40- 100mm

### FLOW CHART:

